

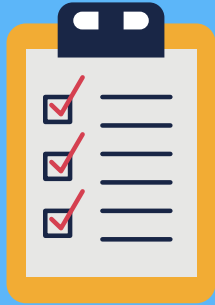
Pre-C6th Home Study

UNIVERSAL PROJECT FOR YEAR 11 HOME LEARNING - SOCIOLOGY

THE BRIEF

WE WOULD LIKE YOU TO DEVELOP A SOCIOLOGICAL RESPONSE AND RESEARCH THE SOCIAL PHENOMENA THAT IS THE CORONAVIRUS. WHAT IS ITS EFFECTS ON SOCIETY?

.....



CREATE A QUESTION

OPTION ONE: COVID-19 AND SOCIAL CONTROL. WHO ARE THE AGENTS OF FORMAL AND INFORMAL SOCIAL CONTROL? WHAT ROLES HAVE THEY PLAYED? WORKERS? GOVERNMENT? FAMILIES? SCHOOL?

OPTION TWO: THE SOCIOLOGY OF COVID-19. WHAT WOULD THE THEORIES MAKE OF RECENT EVENTS? MARXISTS? FUNCTIONALISTS? FEMINISTS?

OPTION THREE: COVID-19 AND THE MEDIA. WHAT IS THE ROLE OF THE MEDIA IN THIS? MORAL PANICS? PUBLIC REACTIONS? PROFIT VS WELFARE?

OPTION FOUR: THE SOCIAL PROBLEMS ATTACHED TO CORONAVIRUS. COMMUNITIES? KEY WORKER STATUS? ECONOMY? GOVERNMENT? CRIME? HEALTH CARE? YOUNG PEOPLE? RELATIONSHIP WITH OTHER COUNTRIES?

.....



CREATE YOUR PRODUCT

WRITE AN ESSAY OR AN ARTICLE ON YOUR CHOSEN TOPIC. ALTERNATIVELY MAKE A POWERPOINT, FILM A VIDEO OR USE CANVA TO PRESENT YOUR FINDINGS.

.....

[HTTPS://WWW.NHS.UK/CONDITIONS/CORONAVIRUS-COVID-19/](https://www.nhs.uk/conditions/coronavirus-covid-19/)

[HTTPS://WWW.WHO.INT/HEALTH-TOPICS/CORONAVIRUS#TAB=TAB_1](https://www.who.int/health-topics/coronavirus#tab=tab_1)

[HTTPS://WWW.GOV.UK/CORONAVIRUS](https://www.gov.uk/coronavirus)

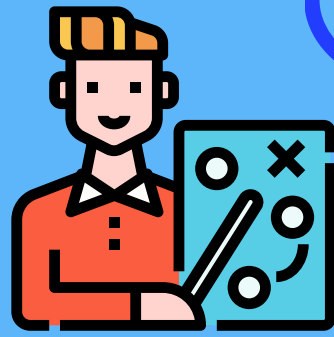
[HTTPS://WWW.THEGUARDIAN.COM/WORLD/2020/MAR/19/CHINAS-CORONAVIRUS-LOCKDOWN-STRATEGY-BRUTAL-BUT-EFFECTIVE](https://www.theguardian.com/world/2020/mar/19/chinas-coronavirus-lockdown-strategy-brutal-but-effective)

[HTTPS://WWW.INDEPENDENT.CO.UK/LIFE-STYLE/FOOD-AND-DRINK/CORONAVIRUS-STOCKPILE-EMERGENCY-LIST-FOOD-HAND-SANITISER-PANIC-BUYING-A9373061.HTML](https://www.independent.co.uk/life-style/food-and-drink/coronavirus-stockpile-emergency-list-food-hand-sanitiser-panic-buying-a9373061.html)

[HTTPS://WWW.INDEPENDENT.CO.UK/NEWS/HEALTH/CORONAVIRUS-BRITISH-ARMY-FRONTLINE-NHS-STAFF-PERSONAL-PROTECTIVE-EQUIPMENT-A9417456.HTML](https://www.independent.co.uk/news/health/coronavirus-british-army-frontline-nhs-staff-personal-protective-equipment-a9417456.html)

[HTTPS://WWW.THESUN.CO.UK/NEWS/11232767/NHS-WORKERS-FIGHTING-CORONAVIRUS-APPLAUSE-FLOWERS-TESCO-STAFF/](https://www.thesun.co.uk/news/11232767/nhs-workers-fighting-coronavirus-applause-flowers-tesco-staff/)

STEP
01



WHAT TO INCLUDE

COMPULSORY INTRODUCTION: WHAT IS THE CORONAVIRUS AND WHAT ASPECT OF THIS WILL SOCIOLOGISTS BE INTERESTED IN?

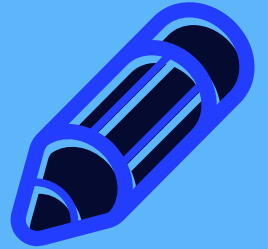
COMPULSORY CONCLUSION: THE EVIDENCE APPEARS TO SUGGEST THAT THE CORONAVIRUS IS A CONCERN FOR SOCIOLOGISTS BECAUSE.....

PERHAPS PEOPLE/ MEDIA/ SCHOOLS/ AND OR GOVERNMENT NEED TO..... AREAS THAT THE GOVERNMENT WILL HAVE TO ADDRESS IN THE FUTURE ARE.....

.....

STEP
02

STEP
03



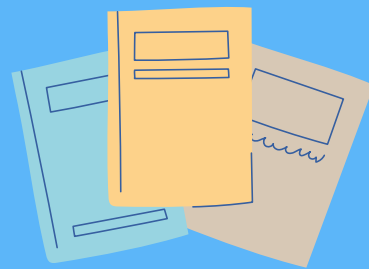
DO YOUR RESEARCH

HAVE A LOOK AT THIS DOCUMENT FOR A MORE DETAILED EXPLORATION INTO EACH OF THE OPTIONS:

[HTTPS://WWW.CORSHAM.WILTS.SCH.UK/ATTACHMENTS/DOWNLOAD.ASP?FILE=171&TYPE=PDF](https://www.corsham.wilts.sch.uk/attachments/download.aspx?file=171&type=pdf)

MAKE NOTES USING THE LINKS BELOW AND YOUR OWN RESEARCH..

.....



STEP
05

