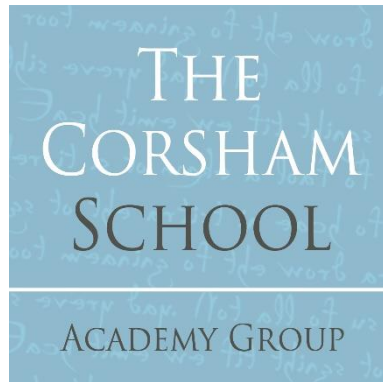


PSAs support families and carers by providing information and advice across a range of issues. They are able to offer support from a variety of agencies.



PARENT SUPPORT ADVISOR

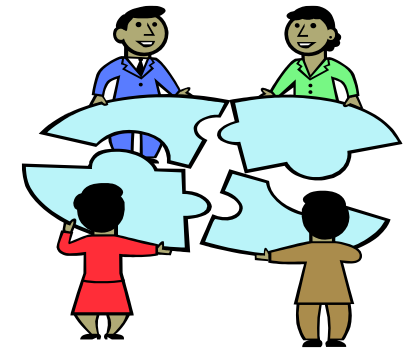
Sue Wort

SWort@corsham.wilts.sch.uk

Tel: 01249 713284

**In school
Mondays and Tuesdays
9 am – 3 pm**

Parent Support Advisor at The Corsham Academy



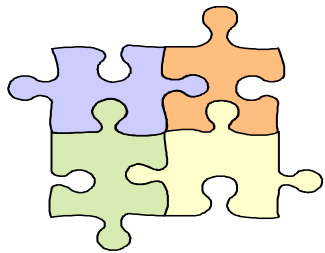
**Information and
Advice for Parents,
Carers and Families**

The service is

- Confidential
- Impartial

Contact **Sue Wort** if you need assistance with :-

- Communicating with school
- Transition to secondary school
- Behaviour
- Attendance
- Parenting
- Signposting or referral to other services.



ARE YOU THINKING

"I am concerned about attendance....."

"I just need someone to listen ..."

"I am really worried about my child's schooling this year"

"I am going through separation, what do I do first?"

"I am struggling with my child's behaviour at home....."

"I could do with some information on free school meals, benefits, housing, bereavement, depression, anxiety, health"

The PSA's role is to support you, so that you can help your child achieve at school.

The role of the PSA is to help you with any concerns or worries you may have in relation to your child's education, behaviour or attendance; and provide support, often signposting or referring families to other agencies who can help.

The single most important factor that improves a child's success and happiness at school is parental Involvement.